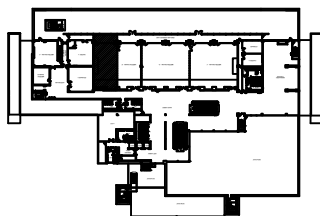


SUMMIT HALL F

SCALE: 1:130 M



TECHNICAL SPECIFICATION

TOTAL AREA = 17.71 x 9.75	172.67 SQ M
CEILING HEIGHT	6.46 M
MEZZANINE HEIGHT	2.40 M
CAPACITY: THEATER	154
CLASSROOM	56
BANQUET (ROUND/RECTANGLE)	100/120
COCKTAIL	100

4TH FLOOR DELEGATION BUILDING

DATE:
08/6/2012